

SECTION 15400 - PLUMBING

GENERAL

SCOPE: PROVIDE AND INSTALL A COMPLETE AND WORKING PLUMBING SYSTEM AS SHOWN ON THE DRAWINGS AND AS SPECIFIED HEREIN.

DRAWINGS ARE DIAGNOSTIC AND NOT INTENDED TO SHOW EACH AND EVERY ITEM.

CODES: COMPLY WITH 1991 UNIFORM PLUMBING CODE AND AMENDMENTS FOR CITY OF ROUND ROCK AS WELL AS ALL APPLICABLE STATE REQUIREMENTS.

SIZES: PROVIDE DIMENSIONS TO GENERAL CONTRACTOR FOR ALL OPENINGS, SLEEVES, CHARGES.

COORDINATION: COORDINATE WITH GENERAL CONTRACTOR ALL SPACE REQUIREMENTS FOR PIPING AND EQUIPMENT.

EXCAVATION AND BACKFILLING: ALL WORK NECESSARY FOR INSTALLATION OF THE PLUMBING SYSTEM SHALL BE PERFORMED BY THIS CONTRACTOR.

SUBMITTALS: SUBMIT THREE COPIES MINIMUM OF THE FOLLOWING TO THE ARCHITECT FOR APPROVAL:

- PLUMBING FIXTURES
- WATER HEATER
- DRAINS AND HYDRANTS

BUILDING SEWER SERVICE

EXTENT: PROVIDE FROM BUILDING TO EXISTING SEWER MAIN. REFER TO CIVIL ENGINEERING DRAWINGS FOR EXTENT OF WORK.

CONTRACTOR: SHALL COORDINATE INSTALLATION OF SERVICE AND CONNECTION TO SEWER MAIN WITH CITY OF ROUND ROCK WATER AND WASTEWATER DEPARTMENT, AND SHALL PAY ALL COSTS ASSOCIATED WITH SEWER SERVICE SO THAT NO CONNECTION CHARGES, OR TAP FEES WILL BE PAID BY OWNER.

FIXTURE SCHEDULE

MARK	DESCRIPTION
P-1	WATER CLOSET HANDICAP
2160-229	AMSTD. "CADET" 18" HIGH WATER SAVER 18 GPF FLOOR MOUNTED FLOOR OUTLET, ELONGATED BOWL, CLOSED COUPLED TANK, VITREOUS CHINA TOILET.
5321-112	CHURCH WHITE, OPEN FRONT SEAT.
1612-448	EASTMAN 1/2" I.P.S. ANGLE VALVE SUPPLY FITTING, W/ 1/2" x 3/8" RISER, ESCUTCHEON AND WHEEL HANDLE, CHROME FINISH.
P-2	URINAL
8541192	AMSTD. "ALLBROOK" WATER SAVER (60 GPF) HANDICAP (18" DEEP), VITREOUS CHINA, WALL HUNG, SIPHON JET URINAL WITH WALL HANGERS, 3/4" TOP SPIND.
188-1	BLOAN ROYAL FLUSH VALVE.
W-400-1038	WADE CARRIER FITTING WITH STEEL UPRIGHTS.
P-3	LAUNDRY
0256-015	AMSTD. "LUCERNE" 20" x 10" VITREOUS CHINA LAUNDRY FOR WALL HANGER, FRONT OVERFLOW, SOAP DEPRESSION AND INTEGRAL BACK AND SIDES, FAUCET HOLES ON 8" CENTERS, PROVIDE WALL HANGER.
2238-582	HERITAGE COMBINATION FAUCET WITH 2 1/2 GPM FLOW RESISTOR, 1" BRASS HANDLES ON 8" CENTERS, 4" SPOUT, POP-UP DRAIN AND 1 1/4" TAIL PECE.
8902	INGURD 17 GA. CAST BRASS ADJUSTABLE P-TRAP WITH CHROME FINISH, 1-1/2" x 1-1/2" SIZE.
SM2	EASTMAN 1/2" I.P.S. ANGLE VALVE SUPPLY FITTING, W/ 1/2" x 3/8" RISER, ESCUTCHEON AND WHEEL HANDLE, CHROME FINISH.
P-4	MOP SINK
MSB-2424	FLAT "MOLDED STONE" 24" SQ. x 10" HT. SERVICE SINK, FLOOR MOUNTED WITH STRAINER.
8344-1	HERITAGE SERVICE SINK FAUCET, 3/4" HOSE OUTLET, VACUUM BREAKER IN SPOUT, ADJ. UNION COUPLINGS, STOPS IN SHAFTS AND CHROME FINISH.
P-5	SINK
P2R-1918	ELKAY 18" x 18" x 1-1/4" DEEP, 80 GA. STAINLESS STEEL, SINGLE COMPARTMENT SINK, ONE HOLE.
LK-25	ELKAY 6.5. DND STRAINER WITH NEOPRENE STOPPER.
LK-88	DINO-CONTROL BAR FAUCET, 18-1/4" HT. GOOSENECK SWING SPOUT W/ ACRATOR.
8902	INGURD 17 GA. CAST BRASS ADJUSTABLE P-TRAP WITH CHROME FINISH, 1-1/2" x 1-1/2" SIZE.
SM2	EASTMAN 1/2" I.P.S. ANGLE VALVE SUPPLY FITTING, W/ 1/2" x 3/8" RISER, ESCUTCHEON AND WHEEL HANDLE, CHROME FINISH.
W.H. #1	WATER HEATER
PK-10-10	STATE ELECTRO, 4500 WATT, 230V/1 PH, 10 GAL. CAPACITY.
MS-K	75 GPH RECOVERY WITH P & T VALVE AND DRAIN TO MOP SINK.
H.S.	HOSE BIBB
885	WOODFORD, FREEZELESS TYPE, BRASS WITH SATIN FINISH, VACUUM BREAKER BACKFLOW PREVENTER IN FLUSH MOUNTING BOX. CONTRACTOR SHALL VERIFY WALL THICKNESS BEFORE ORDERING WITH ARCHITECT.

BUILDING WATER SERVICE

EXTENT: PROVIDE FROM BUILDING TO EXISTING WATER MAIN. REFER TO CIVIL ENGINEERING DRAWINGS FOR EXTENT OF WORK.

CONTRACTOR: SHALL COORDINATE INSTALLATION OF SERVICE AND CONNECTION TO WATER MAIN WITH CITY OF ROUND ROCK WATER AND WASTEWATER DEPARTMENT, AND SHALL PAY ALL COSTS ASSOCIATED WITH WATER SERVICE SO THAT NO CONNECTION CHARGES, METER FEES OR TAP FEES WILL BE PAID BY OWNER.

METERING: ARRANGE SERVICE FOR SINGLE METER FOR ENTIRE PROJECT.

Sanitary Waste and Vent Piping

MATERIAL: SCHEDULE 40 PVC PIPE WITH DRAINAGE FITTINGS.

ROOF VENT FLASHING: 2 1/2 LB. LEAD FLASHING AT EACH VENT EXTENDING THRU ROOF.

VENT ABOVE ROOF: PAINT TO MATCH ROOF COLOR AS DIRECTED BY ARCHITECT.

DOMESTIC WATER PIPING

MATERIAL: FIVE FEET OUTSIDE BUILDING AND BELOW GROUND, PROVIDE TYPE L SOFT COPPER TUBING WITHOUT JOINTS BELOW CONCRETE SLAB. INSIDE THE BUILDING, PROVIDE TYPE L HARD COPPER TUBING. FITTINGS TO BE MADE WITH LEAD FREE SOLDER.

VALVES: GATE OR BALL VALVES EQUAL TO CRANE #358 OR NSCO #1-680W.

FIXTURE VALVES: CHROME PLATED, WHERE EXPOSED TO VIEW, WHEEL HANDLE.

ACCESS DOORS: PROVIDE FOR ALL INACCESSIBLE VALVES.

INSULATION: FOR COLD AND HOT WATER PIPING, PROVIDE 1" FIBERGLASS PIPE INSULATION WITH FACTORY APPLIED WHITE VAPOR BARRIER EQUAL TO GOWIS CORNING 25 A51. LABEL PIPING WITH TYPE OF SERVICE AND DIRECTION OF WATER FLOW.

PIPE HANGERS AND SUPPORTS: ALL PIPES, BOTH HORIZONTAL AND VERTICAL, SHALL BE SUPPORTED ADEQUATELY FROM THE CONSTRUCTION FOR HORIZONTAL PIPES, 1 1/2" AND SMALLER, HANGERS ON 8 FT. MAX. CENTERS; 10 FT. INTERVALS FOR PIPES 2" AND LARGER.

FLOOR DRAINS, FLOOR SINKS AND HYDRANTS

FLOOR DRAIN: WADE W-100 OR EQUAL WITH "X"X" DIAMETER ADJUSTABLE NICKEL BRONZE STRAINER. PROVIDE WITH SEPARATE DEEP SEAL P-TRAP, SIZE 3" DIAMETER UNLESS OTHERWISE NOTED ON DRAWINGS.

WALL HYDRANT: KEY OPERATED WOODFORD NO. 88 OR EQUAL, FREEZELESS TYPE, BRASS WITH SATIN CHROME FINISH, HOSE THREAD.

PLUMBING FIXTURES

GENERAL: MARKERS AND MODELS INDICATED FOR FIXTURES IN PLUMBING FIXTURE SCHEDULE ON THE DRAWINGS ARE FOR THE PURPOSE OF INDICATING TYPE AND QUALITY ONLY AND ARE NOT INTENDED TO BE COMPLETE AS TO ALL ACCESSORIES. CONTRACTOR SHALL FINISH FIXTURES COMPLETE WITH ALL ACCESSORIES REQUIRED FOR NORMAL USAGE.

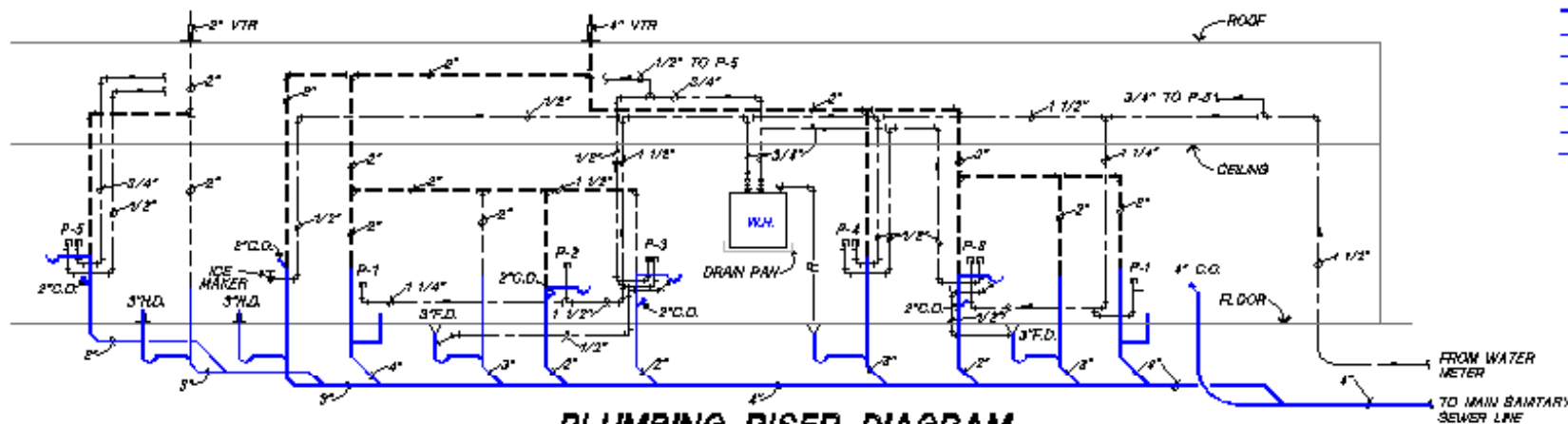
COLOR: COLOR OF ALL FIXTURES IS TO BE WHITE, UNLESS OTHERWISE INDICATED.

MANUFACTURER: FIXTURES SPECIFIED ARE THOSE OF AMERICAN STANDARD UNLESS WHERE ANOTHER MANUFACTURER IS LISTED. EQUAL FIXTURES BY KOLLER, CRANE OR ELJER MAY BE SUBMITTED FOR APPROVAL.

END OF SECTION

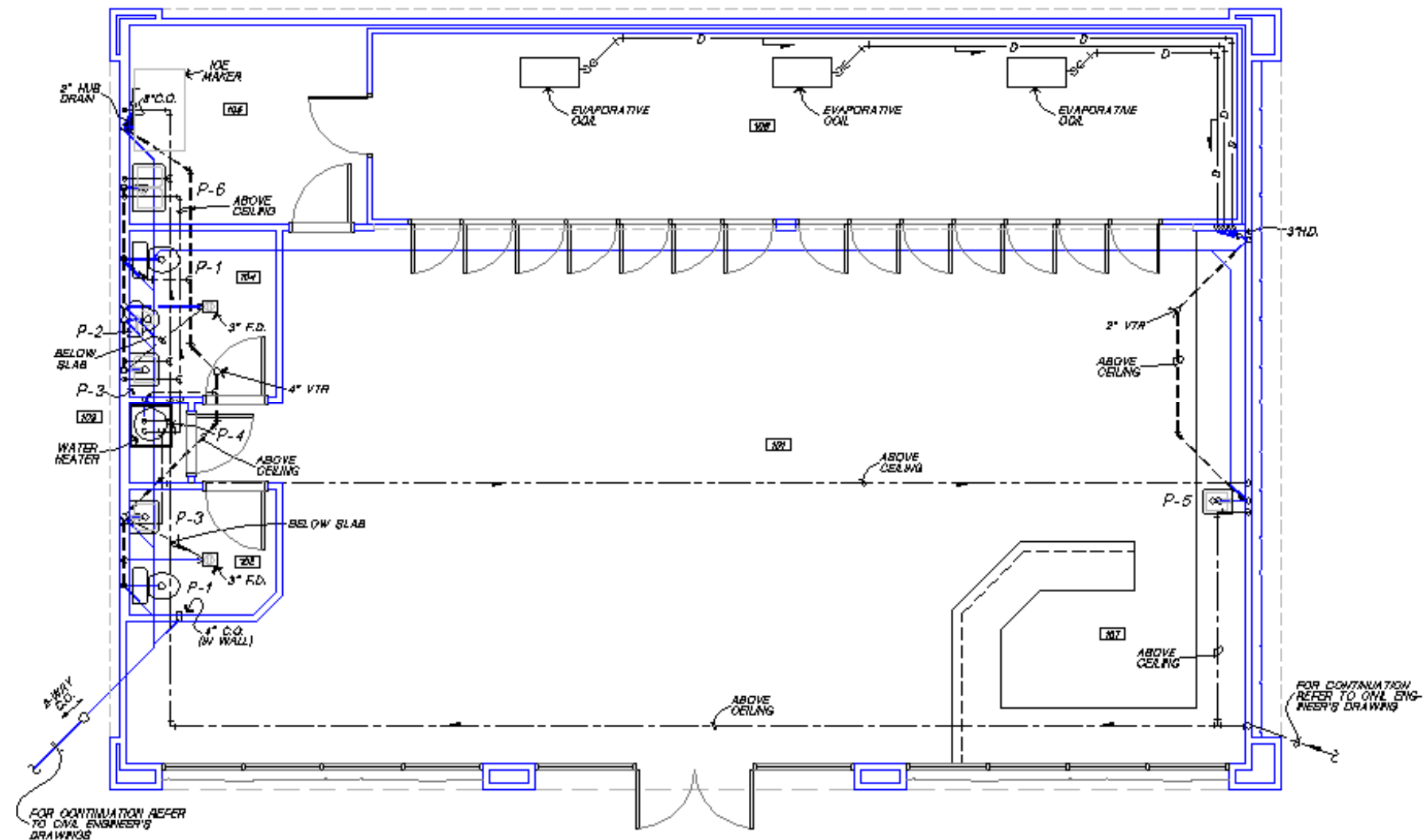
PLUMBING FIXTURE CONNECTION SCHEDULE

MARK	DESCRIPTION	COLD WATER		HOT WATER		WASTE		VENT
		R/W	CONV.	R/W	CONV.	R/W	CONV.	
P-1	WATER CLOSET HANDICAP	1/2"	3/8"	-	-	4"	4"	3" INK
P-2	URINAL HANDICAP	1"	1"	-	-	2"	2"	1-1/2"
P-3	LAUNDRY	1/2"	3/8"	1/2"	3/8"	2"	1-1/2"	1-1/2"
P-4	MOP SINK	1/2"	3/8"	1/2"	3/8"	2"	2"	1-1/2"
P-5	SINK	1/2"	3/8"	1/2"	3/8"	2"	1-1/2"	1-1/2"
P-6	B COMP. SINK							



PLUMBING RISER DIAGRAM

NOT TO SCALE



PLUMBING PLAN

SCALE 1/4"=1'-0"

GENERAL NOTES

- DRAWINGS ARE DIAGNOSTIC AND ARE NOT INTENDED TO SHOW EACH AND EVERY ITEM.
- COORDINATE WITH OTHER TRADES.
- REFER TO ARCHITECTURAL PLANS AND ELEVATIONS FOR DIMENSIONS AND ADDITIONAL INFORMATION.
- REFER TO SPECIFICATIONS FOR DATA NOT SHOWN ON DRAWINGS.
- REPORT CONFLICTS TO ARCHITECT/GENERAL CONTRACTOR.

PLUMBING PLAN LEGEND

- SANITARY SEWER
- VENT
- DOMESTIC COLD WATER LINE
- DOMESTIC HOT WATER LINE
- GATE OR BALL VALVE
- UNION
- CHECK VALVE
- DIRECTION OF FLUID FLOW
- TEMP & PRESSURE RELIEF VALVE
- G.O. GLEANDIT
- F.D. FLOOR DRAIN
- H.B. HOSE BIBB (WALL HYDRANT)
- V.T.R. VENT THROUGH ROOF
- W.H. WATER HEATER
- H.D. HUB DRAIN

A New Building
EXXON
 Georgetown, Texas

DATE
 4-08-96
 JOB NO. 158

REVISIONS

SHEET
P-1
 OF 11

PLUMBING PLAN