

PANEL P1 120/208 VOLTS 4 WIRE 3 PHASE MLO 250A BUSS INTERRUPTING CAPACITY 10,000 AMPS
SERVES WHOLE BUILDING MOUNTING SURFACE OCT SPACES 22 S/W GRND BAR

CCT. NO.	SERVING	WATTS			BREAKER	WIRE SIZE SHOWN S FOR THRU		BREAKER	WATTS			SERVING	CCT. NO.
		AG	BO	CO		AMP	POLE		COND	COND	AMP		
1	COOLER COMP.	1000			20	3	3#12 1/2"	2#12 1/2"	20	2	2000	ICE MACHINE	2
3	COOLER COMP.	1000			20	3	3#12 1/2"	2#12 1/2"	20	2	2000	ICE MACHINE	2
5	COOLER COMP.	1000			20	3	3#12 1/2"	2#12 1/2"	20	2	2000	HAND DRYER MEN'S	6
7	COOLER COMP.	1000			20	3	3#12 1/2"	2#12 1/2"	20	2	2000	HAND DRYER MEN'S	6
9	COOLER COMP.	1000			20	3	3#12 1/2"	2#12 1/2"	20	2	2000	HAND DRYER WOMEN'S	70
11	COOLER COMP.	1000			20	3	3#12 1/2"	2#12 1/2"	20	2	2000	HAND DRYER WOMEN'S	70
13	COOLER COMP.	1000			20	3	3#12 1/2"	2#12 1/2"	20	2	2000	UNLEADED REG. STR.	24
15	COOLER COMP.	1000			20	3	3#12 1/2"	2#12 1/2"	20	2	2000	UNLEADED REG. STR.	24
17	COOLER COMP.	1000			20	3	3#12 1/2"	2#12 1/2"	20	2	780	DIESEL STR.	20
19	COOLER COMP.	1000			20	3	3#12 1/2"	2#12 1/2"	20	2	780	DIESEL STR.	20
21	COOLER FAN #1	750			20	1	2#12 1/2"	2#12 1/2"	20	1	750	DISPENSER	24
23	COOLER FAN #2	750			20	1	2#12 1/2"	2#12 1/2"	20	1	750	DISPENSER	24
25	COOLER FAN #3	750			20	1	2#12 1/2"	2#12 1/2"	20	1	1300	DISPENSER	24
27	SPARE				20	1	2#12 1/2"	2#12 1/2"	20	1	1260	EXTRA UNLEADED	26
29	UNIVERSITY BOX	180			20	1	2#12 1/2"	2#12 1/2"	20	1	1260	EXTRA UNLEADED	26
31	ATM MACHINE	1500			20	1	2#12 1/2"	2#12 1/2"	20	1	1650	AIR COMPRESSOR	30
33	RED WALL	250			20	1	2#12 1/2"	2#12 1/2"	20	1	1650	Q-SITE EQUIP. 10	32
35	*TOILETS	380			20	1	2#12 1/2"	2#12 1/2"	20	1	1800	LEAK DETECTOR	34
37	*ROOF	180			20	1	2#12 1/2"	2#12 1/2"	20	1	500	ICE MAKER FAN	36
39	WATER HEATER	2250			20	1	2#12 1/2"	2#12 1/2"	20	1		SPARE	38
41	WATER HEATER	2250			20	1	2#12 1/2"	2#12 1/2"	20	1		SPARE	40
43	SPARE				20	1	2#12 1/2"	2#12 1/2"	20	1		SPARE	42
CONNECTED TOTAL		AG	BO	CO	PANEL TOTAL		WATTS		AMPS		FEEDER		
		13,780	13,880	13,980			41-88		114		SEE PANEL 'W' SCHEDULE		

PANEL P2 120/208 VOLTS 4 WIRE 3 PHASE MLO 250A BUSS INTERRUPTING CAPACITY 10,000 AMPS
SERVES WHOLE BUILDING/LTS./REG. MOUNTING FLUSH OCT SPACES 42 S/W GRND BAR

CCT. NO.	SERVING	WATTS			BREAKER	WIRE SIZE SHOWN S FOR THRU		BREAKER	WATTS			SERVING	CCT. NO.
		AG	BO	CO		AMP	POLE		COND	COND	AMP		
1	INT. LUMIN. PANEL	1042			20	1	2#12 1/2"	2#12 1/2"	20	1	344	LTS-NIGHT LTS	2
3	EX. LUMIN. PANEL	1042			20	1	2#12 1/2"	2#12 1/2"	20	1	1708	*SALES	4
5	INT. LUMIN. PANEL	1042			20	1	2#12 1/2"	2#12 1/2"	20	1	328	*OFF/TOILETS	6
7	BULD. SUPPLY LTS.	1800			20	1	2#12 1/2"	2#12 1/2"	40	2	1820	ISLAND A SPREADER	8
9	CANOPY LIGHTS	1800			20	1	2#12 1/2"	2#12 1/2"	40	2	1820	*/SIGN	10
11	CANOPY LTS.	1800			20	1	2#12 1/2"	2#12 1/2"	40	2	1820	ISLAND B SPREADER	12
13	CANOPY LTS.	1800			20	1	2#12 1/2"	2#12 1/2"	40	2	1820	*/SIGN	14
15	CANOPY LTS.	1800			20	1	2#12 1/2"	2#12 1/2"	40	2	1820	WASH ID BUSH	16
17	CANOPY LTS.	1800			20	1	2#12 1/2"	2#12 1/2"	40	2	1820	CANOPY FACIA	18
19	CANOPY LTS.	1800			20	1	2#12 1/2"	2#12 1/2"	40	2	900	REG-CASH REGISTER	20
21	CANOPY LTS.	1800			20	1	2#12 1/2"	2#12 1/2"	40	2	600	*VIDEO MONITOR	22
23	CANOPY LTS.	1800			20	1	2#12 1/2"	2#12 1/2"	40	2	1000	*SCDA DISPENSER	24
25	REC-FRONT OTR.	720			20	1	2#12 1/2"	2#12 1/2"	20	1	1800	*UNIDROWAVE	26
27	*POPCORN	1800			20	1	2#12 1/2"	2#12 1/2"	20	1	600	*CARBONATOR	28
29	*SALES COUNTER	400			20	1	2#12 1/2"	2#12 1/2"	40	2	1910	COFFEE MAKER	30
31	*FRONT COUNTER	400			20	1	2#12 1/2"	2#12 1/2"	40	2	1910	COFFEE MAKER	32
33	SPARE				20	1	2#12 1/2"	2#12 1/2"	40	2	1910	COFFEE MAKER	34
35	SPARE				20	1	2#12 1/2"	2#12 1/2"	40	2	1910	COFFEE MAKER	36
37	SPARE				20	1	2#12 1/2"	2#12 1/2"	40	2		SPARE	38
39	SPARE				20	1	2#12 1/2"	2#12 1/2"	40	2		SPARE	40
41	SPARE				20	1	2#12 1/2"	2#12 1/2"	40	2		SPARE	42
CONNECTED TOTAL		AG	BO	CO	PANEL TOTAL		WATTS		AMPS		FEEDER		
		14,152	14,867	14,867			43,077		120		SEE PANEL 'W' SCHEDULE		

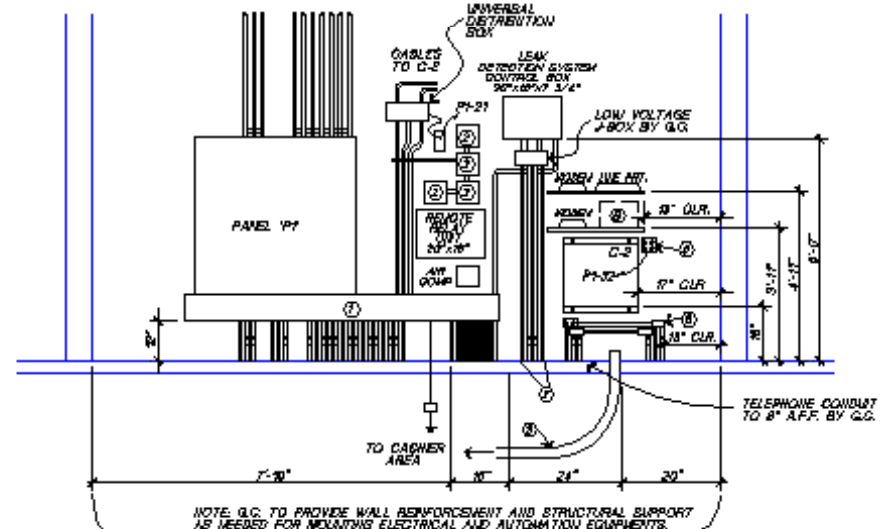
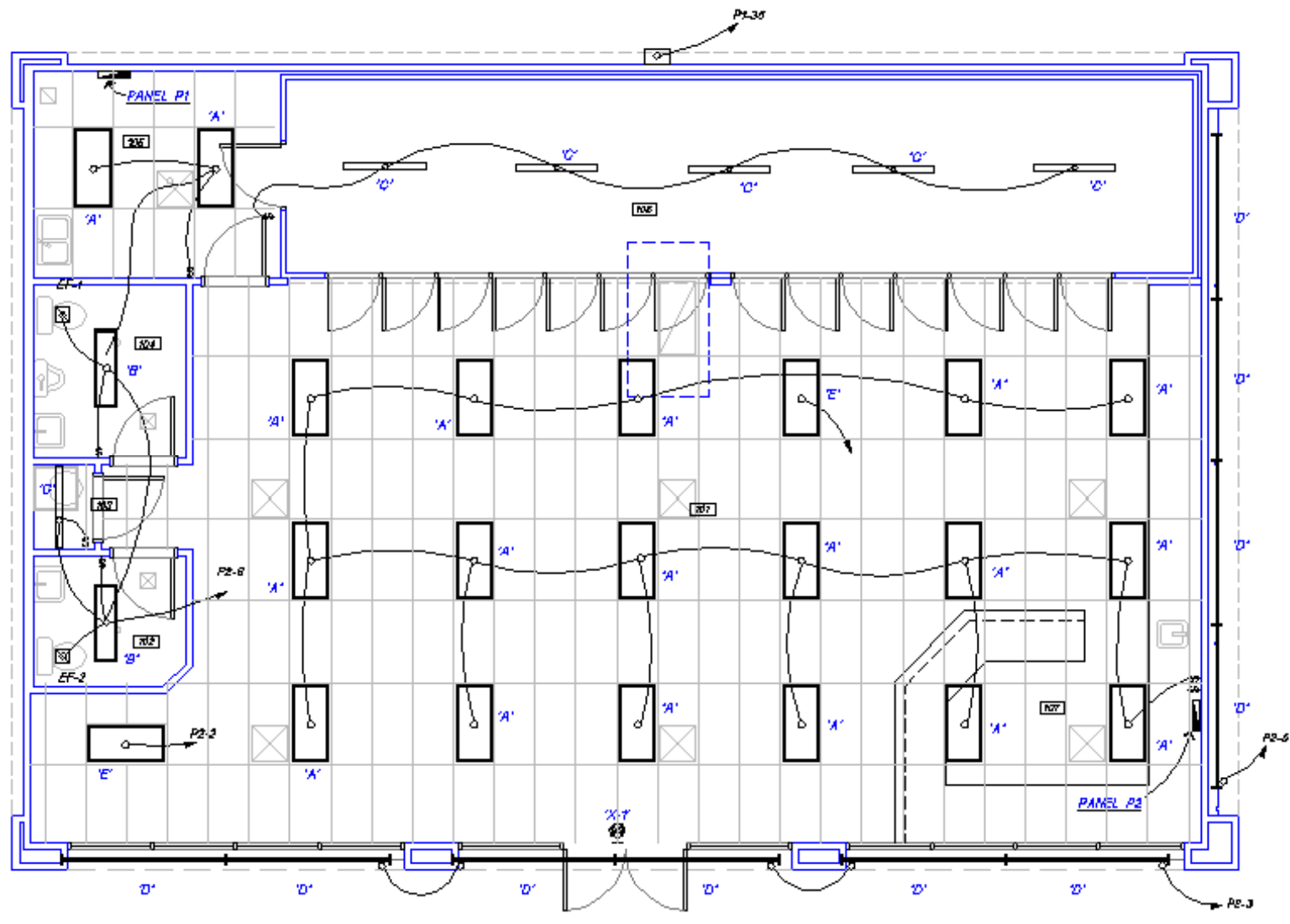
PANEL M 120/208 VOLTS 4 WIRE 3 PHASE
400 AMPS MAR. MLO. S/W GRND BAR

CCT. NO.	SERVING	CIRCUIT BREAKER		FEEDER SIZE
		AMP	POLE	
1	PANEL P1	200	3	4 #3/8 AND 1 #6 GRND IN 2" C.
2	PANEL P2	200	3	4 #3/8 AND 1 #6 GRND IN 2" C.
3	RTU #1 & HEATER	100	3	3 #2 & 1 #6 GRND IN 2-1/4" C.
4	SPACE	200	3	
5	SPACE	125	3	

GENERAL NOTES
DRAWINGS ARE DIAGRAMATIC AND ARE NOT INTENDED TO SHOW EACH AND EVERY ITEM.
COORDINATE WITH OTHER TRADES.
REFER TO ARCHITECTURAL PLANS AND ELEVATIONS FOR DIMENSIONS AND ADDITIONAL INFORMATION.
REFER TO SPECIFICATIONS FOR DATA NOT SHOWN ON DRAWINGS.
REPORT CONFLICTS TO ARCHITECT/GENERAL CONTRACTOR.

LIGHT FIXTURE SCHEDULE

FIXTURE NUMBER	LAMP TYPE	DESCRIPTION	CATALOG NUMBER
A	3-34W F40/CW RS/YMM	2'x4' FLUORESCENT LAY-IN FIXTURE W/ .188" THICK LENS AND ENERGY SAVING BALLAST (RECESS/CEILING)	LITHONIA 267340 A12:125 120 ES
B	3-34W F40/CW RS/YMM	2'x4' FLUORESCENT LAY-IN FIXTURE W/ .188" THICK LENS & EMER. BATTERY KIT (RECESS-CEILING)	LITHONIA 267340 A12:125 20 ES EL
C	1-80W F40/CW RS	4 FT. STRIP FL. FIX. W/GOLD WEATHER BALLAST (SURFACE-COOLER)	LITHONIA DM-148-AP
D	3-78W F80T12 CW	8 FT. STRIP FL. FIX. WITH GOLD WEATHER BALLAST & REGULAR LAMPS (SURFACE-SQFR)	LITHONIA UN88 120 CW
E	3-34W F40/CW RS/YMM	SAME AS 'A' EXCEPT W/EMER. BATTERY KIT. (RECESS-CEILING)	LITHONIA 267340 A12:125 120 ES EL
X-1	1-7W INCLUDED TT	FLUOR. EXIT W/BLACK STEEL HOUSING W/RED LETTERS, NICKEL CAD BATTERY, STENCIL (SURFACE-WALL ABOVE DOOR)	LITHONIA FXS12 120 EL. N
EM	2-70W INCLUDED TUNGSTEN	EMERGENCY TWIN EYEBROW LIGHT FIXTURE WITH BATTERY PACK (SURFACE-WALL)	LITHONIA ELK2



KEY NOTES
① 2" x 8" x 4" WIRE TROUGH
② MOTOR CONTROL BOX. VERIFY IF FURNISHED BY EXXON AND INSTALLED BY CONTRACTOR.
③ VIDEO FOOT SWITCH - CASHIER STATION "B". VERIFY IF FURNISHED AND INSTALLED BY EXXON.
④ 1-1/2" CONDUITS FOR CAR WASH MAY BE DELETED SINCE THERE IS NOT ANY CAR WASH ON THIS PROJECT.
⑤ DEDICATED QUADPLEX OUTLET BY G.C.
⑥ TELEPHONE/INTERCOM CONDUIT WITH J-BOXES AND JACKS BY G.C.
⑦ LOW VOLTAGE CONDUITS TO TANKS AND ISLANDS BY G.C.
⑧ PRINTER PAPER BOTTOM FEED

LIGHTING PLAN
SCALE: 1/4" = 1'-0"

LIGHTING PLAN LEGEND

- ① SINGLE POLE SWITCH
- ② 3 WAY SWITCH
- LIGHT FIXTURE
- WALL MOUNT LIGHT FIXTURE
- ⊙ EXT LIGHT
- POLE MOUNTED LIGHT FIXTURE
- EMERGENCY LIGHT
- FEEDER CIRCUITS, CONDUIT AND LIGHTING BRANCH CIRCUITS
- NEUTRAL AND HOT CONDUCTORS WITHOUT SWITCH LEG
- BRANCH CIRCUIT HOME RUN
- PANELBOARD
- ⊙ EXHAUST FAN
- MOTOR
- ⊙ JUNCTION BOX

ABBREVIATIONS

- A ABOVE FINISH FLOOR
- AFF ABOVE FINISH GRADE
- AMP AMPERES INTERRUPTING CAPACITY
- BWR CIRCUIT BREAKER
- CU CONDENSING UNIT
- EC EMPTY CONDUIT
- EDF ELECTRIC DRINKING FOUNTAIN
- EMH ELECTRIC WATER HEATER
- EF EXHAUST FAN
- FAC FAN AND COIL UNIT
- GF GROUND FAULT INTERRUPTER
- GRND GROUND
- MCB MAIN CIRCUIT BREAKER
- MCD MAIN CUBICLE ONLY
- MH METAL HALIDE
- V VOLT
- UN UNLESS OTHERWISE NOTED

A New Building
EXXON
Georgetown, Texas

DATE
4-08-86
JOB NO: 153

REVISIONS

SHEET
E-2
OF 11

LIGHTING PLAN